

ASX Release**9 October 2017****ASX: LHM**

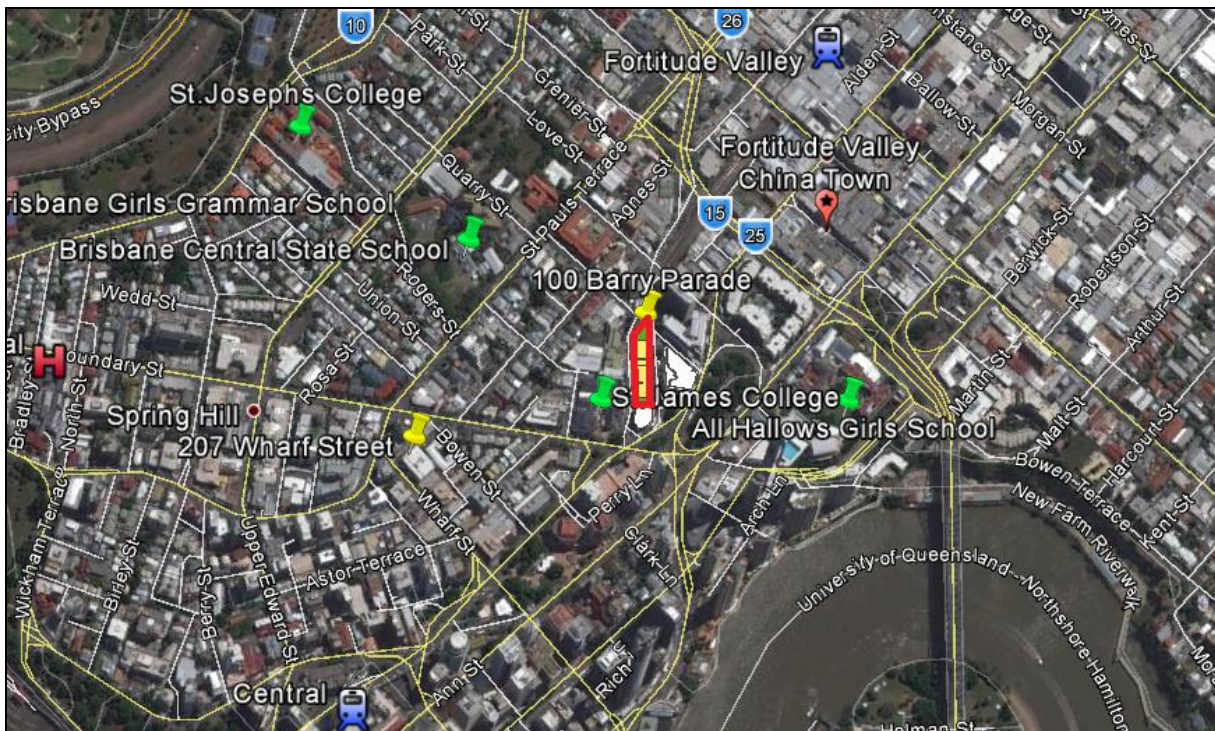
New Development Approval granted for Barry Parade Property

Land & Homes Group Limited (ASX: LHM) (**Land & Homes** or **the Company**) is pleased to announce that a new Development Application has been granted for the re-development of its 100 Barry Parade, Fortitude Valley ("Barry Parade") property.

Description of property

The 100 Barry Parade site is (3154m²) currently comprised of a number of single storey commercial/industrial units together with an operational services station, and is occupied by three tenants on a monthly holdover.

The site is ideally located on the edge of the Brisbane CBD, Fortitude Valley and Spring Hill. It is within easy walking distance of the city and its major retail and entertainment offerings, employment nodes, several schools, and has a variety of transport options available to it.



New Development Application

The new Development Approval ("DA") is for a two tower development offering a total residential of 492 apartments with a high level of resident amenities and services.

The Company had undertaken the new DA application in line with its business strategy to offer a higher standard of residential product to the market. The new scheme offers comfortable living, convenient to employment and cultural attractions for long time retention of owners and tenants, which it considers are a key consideration of future purchasers.

The revised planning will allow for a staged approach to the re-development of the site that provides the Company with more flexibility in the development program to deliver a better return for shareholders. The DA conditions of permissible use also include the opportunity for a short term serviced accommodation component if considered desirable.



The revised development will have a reduced overall footprint and includes:

- a two tower development of 26 and 36 levels.
- a mix of; one (30%), two (60%) and three (10%) bedroom apartments;
- 720sqm of ground floor retail facilities,
- 500sqm of internal recreation area
- 404 car parking spaces over 4 basement levels.
- Extensive urban renewal enhancement of the local precinct including street landscaping and a public park

In addition to its strategic location, the new development will offer a high level of quality in apartment planning, building design and finish plus it will incorporate energy management initiatives providing high environmentally sustainable development standards for both resident and body corporate benefit.

For further information:

Grant Archibald, Executive Director + 61 7 3905 5658 or info@landnhomesgroup.com

About Land & Homes Group Limited

Land & Homes Group Limited (LHM) is a property development company focused on the acquisition of prime sites for project development into quality residential, commercial and mixed-use apartments. The Company is listed on the Australian Securities Exchange. Its strategy is to hold a diverse portfolio of high-yield properties and projects at various stages of development and construction.

The Company's operations have been established in Brisbane to develop quality, medium to high-density residential apartments for an expanding market in the strong sustainable growth region of South East Queensland. Initially concentrating the business activity on Brisbane city, the residential products are to be developed in attractive convenient locations of inner Brisbane area suitable for a balance of both investors and owner occupiers.

The Company is well placed to leverage the credentials and track record of its major shareholder, the Lian Huat Group, in property development in Australia with strong networks and insight into the needs of investors from Asia. With this experience, LHM will realise its *Asia Vision* through the establishment of an experienced management team that has expertise in Australia's property market, urban planning, project management and finance, along with an intimate knowledge of the appetite and demands of the significant Asian market.

Please visit the Company web site for additional details: www.landnhomesgroup.com